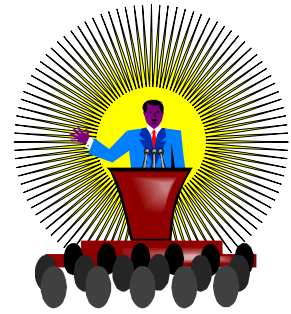


Journey Weekend Northwest 2008 PUBLIC SPEAKING FESTIVAL GUIDELINES



I PURPOSE

The Public Speaking Festival is designed to encourage youth in the development and use of talents and gifts which the Lord has given them for use in ministry.

II FESTIVAL GUIDELINES

1. Participants may choose one of the following Public Speaking/Ministry Presentation opportunities:
 - a. **Council Time Message**
 - b. **Council Time Presentation** (such as puppets or drama.)
2. Each presentation will be seven to 10 minutes. Presentations exceeding time limits will be stopped.
3. Theme: salvation/evangelism or Christian living.
4. Council Time message or presentation will be geared for third- to sixth-grade Awana clubbers.
5. Participants must supply judges with **three clearly typed outlines** describing the content of the presentation.
6. Participants must bring their own props.
7. **Your registration entry is to be sent by January 31, 2008 to:**

Awana – JWN
450 W Locust St
Stayton, OR 97383
8. Please note: the rating system used at Summit 2008 and Journey Weekend Northwest may vary.

III JUDGING

You will be judged in the following manner:

1. Presentation: Does the speaker maintain eye contact with audience, use hands for emphasis, and speak with expression.
2. Overall flow of message: Do the speaker's thoughts hang together in a logical manner?
3. Use of illustration in message: Does the speaker use anecdotes, symbols, etc. to illustrate the theme of his/her message?
4. Use of application in message: Does the speaker impart his/her information in such a manner that the listeners can apply truth to their lives?
5. Use of biblical proof in message: Does the speaker relate what he/she is saying to Scripture?
6. Topic well explained: Does the speaker give sufficient information to persuade the audience, considering the age group?
7. Message brought to point of conclusion: Does the speaker end his/her speech in an appropriate way?
8. Delivery of message
9. Preparation of presenter(s)